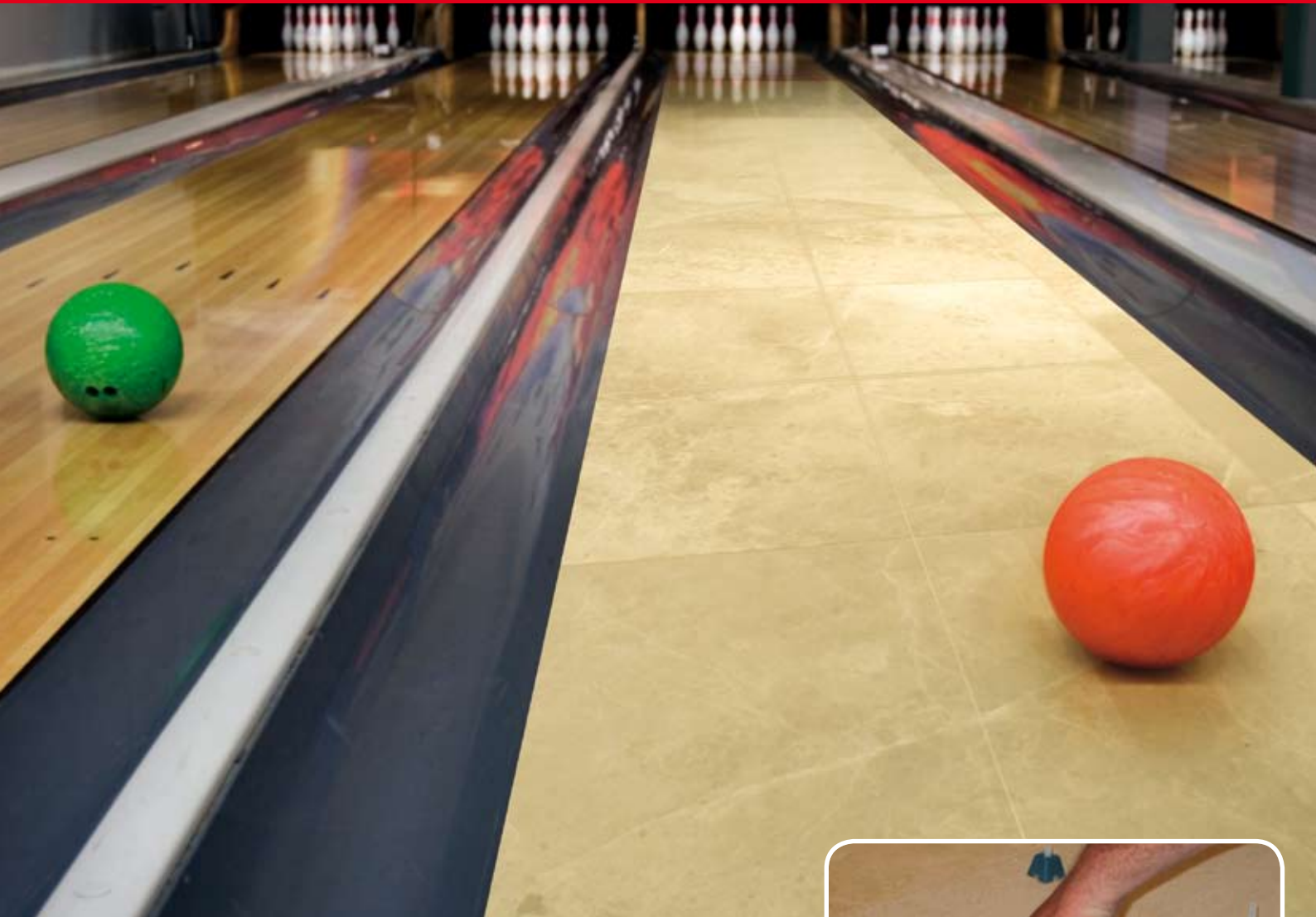
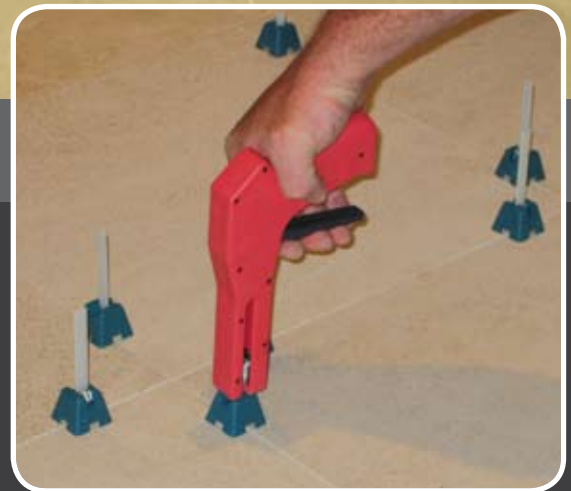


WHEN IT HAS TO BE LIPPAGE FREE TUSCAN LEVELING SYSTEM IS THE SOLUTION

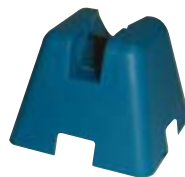


Lippage Free System - Advantages

- Very easy to learn and use at any skill level
- Virtually eliminates lippage
- Installation is twice as fast
- Prevents tiles from moving while drying
- More profitable for the installer
- Re-usable caps
- For tiles 300mm or larger
- Reduces installer fatigue and stress
- Lippage free, level surface drastically reduces the need for grinding



Tuscan Levelling System Strap
Box of 1000 or 2000



Tuscan Levelling System Cap
Box of 250 or 1000 pcs



Tuscan Levelling System Setting Tool - Ergonomic
1 Unit


TUSCAN
TM
LEVELING SYSTEM



FREQUENTLY ASKED QUESTIONS

Q. How do I profit by using the Tuscan Leveling System?

A. In most cases, installation time is 2 times faster, which puts money in your pocket when the job is bid on a square metre basis. Additionally, as the installer, you can usually pass on the cost of the Tuscan Leveling System on to your client as part of the cost of the job.

Q. Can the caps be reused?

A. Some installers report that they have reused the caps as many as 30 or more times (which greatly reduces the overall cost of installing).

Q. Does the Tuscan Leveling System help eliminate lippage?

A. Yes, the unique patented system virtually eliminates lippage.

Q. Does the Tuscan Leveling System eliminate grinding after installation?

A. In most cases the Tuscan Leveling System virtually eliminates the need for grinding.

Q. How much faster is the tile leveling process using the Tuscan Leveling System?

A. Responses from actual installers indicate that in large open spaces the installation can be three times as fast. In areas where there is significant cut up or fitting, to be done, they report it can be twice as fast. In our DVD we show two installers, plus a helper, installing 12 square metres in only one hour.

Q. Will the Tuscan Leveling System work with small tiles?

A. The Tuscan Leveling System is designed to work with tiles 300mm or larger.

Q. Will the Tuscan Leveling System work with ceramic tiles?

A. The Tuscan Leveling System will work with ceramic, marble, onyx, granite, and most composites.

Q. When using the Tuscan Leveling System, can tiles be walked on while the adhesive is still wet?

A. Although we can't officially recommend it, in most cases, yes.

Q. Can the Tuscan Leveling System be used on walls?

A. Yes.

Q. Why do you recommend soaking the straps in hot water prior to use?

A. For best results, the straps should be soaked in hot water for at least 60 minutes prior to use. The proprietary composition of the strap needs to absorb sufficient moisture so it will stretch properly during installation. As the mastic adhesive is drying, it pulls moisture out of the strap so that the strap can snap off cleanly after drying is complete.

Q. Will there be air pockets under tiles after using the Tuscan Leveling System?

A. No. We recommend that the installer "back-butter" the tiles as part of the installation.

Q. What is the learning curve using the Tuscan Leveling System?

A. Usually only minutes, not hours, or days...



CDK Stone Pty Ltd
ABN 52 104 900 647
enquiries@cdkstone.com.au
www.cdkstone.com.au

Melbourne - Head Office
4 - 6 Freighter Road
Moorabbin, VIC 3189
Tel (03) 8552 6000
Fax (03) 8552 6001

Sydney
20 Yulong Close
Moorebank, NSW 2170
Tel (02) 9822 5155
Fax (02) 9822 5166

Gold Coast
26 Wrights Place
Labrador, QLD 4215
Tel (07) 5537 3222
Fax (07) 5537 3444

Perth
Unit 3 / 5 Mulgool Road
Malaga, WA 6090
Tel (08) 9248 3533
Fax (08) 9248 9122